

# COMPACT DROP DOWN

drop down Length = 164 mm - 244 mm - 355 mm

**COMPACT** is the new gas and oil stay conception with a completely new design available also to open drop down doors. It has been conceived to be installed by using standard automatic drilling processes. It is available in just one strength to suit small-medium-big size doors. It can be directly fixed on solid doors or wider aluminium frame section doors. For small aluminium sections a range of special adaptors is available. It has a special slow down system, once you begin to open the door, it continues to open gently and completely by itself.

Quick and easy installing:

just slot the piston onto the door bracket and then easily click it against the side bracket.

A plastic cover on the door bracket can be provided and personalized on request.

Useful method:

To change the time in opening of the door by installing the side bracket in accordance to the suggested positions (position A or position B).

All the parts (stay excluded) are in zinc alloy nickel plated and engineering plastic.

In accordance with regulations UNI 8607/05 Level 5 and UNI EN 14749/05



REGISTERED DESIGN

## DRILLING PLAN

### STANDARD SPRUNG HINGE

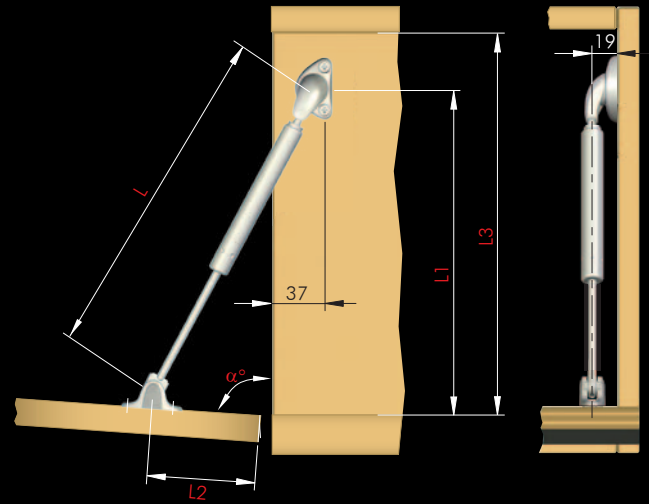
Part.no	L (mm)	L1 (mm)	L2 (mm)	L3 (mm)	$\alpha^\circ$
42501010NN	164	164	47	193 min.	88°
42510010NN	244	240	84	270 min.	86°
42530010NN	355	345	135	374 min.	85°

The dimensions of the above drilling plan refer to carcasses which use standard sprung hinges and mounting plates 0 mm.

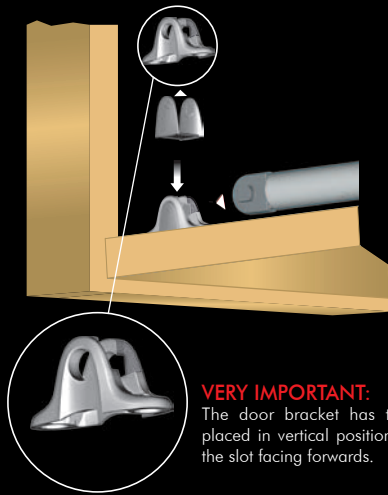
### FLAP HINGE

Part.no	L (mm)	L1 (mm)	L2 (mm)	L3 (mm)	$\alpha^\circ$
42501010NN	164	155	53	193 min.	90°
42510010NN	244	229	84	270 min.	90°
42530010NN	355	330	130	374 min.	90°

The dimensions of the above drilling plan refer to carcasses which use flap hinges.



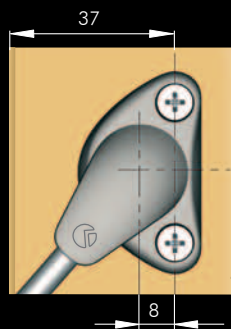
## ASSEMBLING



### VERY IMPORTANT:

The door bracket has to be placed in vertical position with the slot facing forwards.

### POSITION A

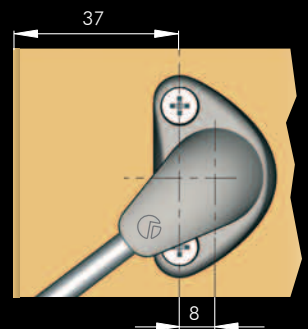


### VERY IMPORTANT:

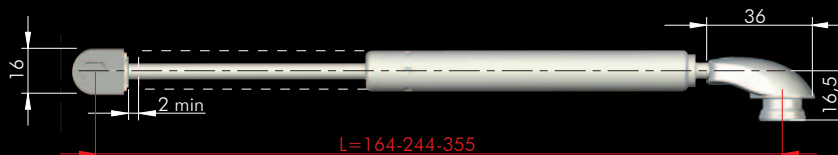
Please secure in position the side bracket with the central screw only when you are sure of the required type of closing.

- Position A = the door opens automatically later.
- Position B = the door opens automatically in advance.

### POSITION B



## TECHNICAL DRAWING AND CHART TO FIND THE RIGHT STRENGTH



## DROP DOWN

Width door (mm)	1200 max.	
Height door (mm)	Stays	Kg
225 - 250	2xL 164mm	<3,5
301 - 350	2xL 244mm	<4,9
401 - 450	2xL 355mm	<6,3

This chart refers to chipboard or MDF 18 mm doors and aluminium frame doors with glass 4 mm thick. These are experimental results to be checked by the customer.

For a better function and for safety reasons, we suggest to use at least two stays per piece of furniture (extra-size doors might require 3 or more gas stays).

For doors whose weights/dimensions are bigger than those reported on the chart, please increase the number of stays accordingly. Our technical department is at your disposal to test further cases out of this chart.